

THE **CATTLEMENS** CUT
BULL & FEMALE SALE

THURSDAY
MARCH 14, 2019
1:00 PM CT

BELLEVILLE 81 LIVESTOCK
BELLEVILLE, KANSAS

Selling

40 ANGUS BULLS
plus 6 ELITE HEIFERS



Quality Bred On, Not Fed On.

JASON JAGELS 402-364-3191
PRIEFERT ANGUS 402-768-3527

—THE **CATTLEMENS** CUT.COM

THE CATTLEMENS CUT

— BULL SALE —

THURSDAY
MARCH 14, 2019

SALE STARTS AT 1:00 PM CST

SALE LOCATION

Belleville 81 Livestock | 785-527-2258
1160 Old US Hwy 81 | Belleville, Kansas

SALE DAY CONTACTS

Jason Jagels, Jagels Land & Cattle402-364-3191
Tom Priefert, Priefert Angus402-768 3527
Russ Priefert, Priefert Angus402-768-3440

AUCTIONEER

Tracy Harl.....402-461-3575

REPRESENTATIVES

Drew Feller / American Angus Association.....402-841-4215
Chris Beutler / Midwest Messenger.....402-380-8244
Randy Rasby / Livestock Plus, Inc.....308-539-6195
Kelvin Jorgensen.....402-366-9475
Bill Hudson.....402-469-3383
Kane Warren.....402-651-8897
Cody Collins.....307-217-2701

CATALOG DESIGN // MARKETING

Hannah Shroyer / Design Unbridled.....402-841-4216

PHOTOGRAPHY // VIDEO

Derek Vogt // Purple Vision Productions.....402-649-3935

REPEAT BUYER DISCOUNT

2.5% discount taken off of total charges for any buyer that has purchased a bull or heifer at our sale within the past two years.

VOLUME DISCOUNT

2.5% DISCOUNT ON 2-5 BULLS
5% DISCOUNT ON 5 OR MORE BULLS

SCHEDULE OF EVENTS

Bulls will be available for viewing any time before sale day at Jagels Farms in Davenport, NE. Lunch will be served at 12:00 PM on Thursday, March 14, 2019 and the sale will start promptly at 1:00 PM. All times are Central Standard.

DELIVERY

The Cattlemens Cut offers free delivery to Nebraska and adjoining states. Should you choose to haul your own, we offer a \$100 per bull delivery rebate. All bulls must be picked up or delivered by April 1, 2019.

ANNOUNCEMENTS

If there is any inconsistency in the terms of any sales materials, including sale books, supplement sheets or day-of-sale announcements, (i) the day-of sale announcement will control over both the supplement sheet and the sale book, and (ii) the supplement sheet will control over the sale book.

LIABILITY

The Cattlemens Cut does not assume any liability in case of accident or loss of property.

GUARANTEE

All bulls sell backed by The Cattlemens Cut Guarantee. They are guaranteed throughout the first breeding season or 90 days post turn out against injury or death. The animal becomes the property of the purchaser as soon as sold, but it shall be the responsibility of the seller to see that animals are properly cared for until delivered to the purchaser. In case an adjustment is required, it will be made with a replacement animal of equal value to the animal in question or credit will be issued at the next annual sale.

A veterinarian must diagnose all injured bulls.

ONLINE BIDDING

This sale will be broadcast live on **DVAuction.com**. To register and follow the auction in real time on the internet, visit **dvauction.com** and click on The Cattlemens Cut. If you wish to bid by telephone, please call the sale day contacts.

This sale will be broadcast live on the internet.

DVAuction
Broadcasting Real-Time Auctions



Priefert Angus
RIP



JAGELS
LAND & CATTLE



WELCOME CATTLEMEN

Welcome to the 2019 Cattlemen's Cut Bull Sale! On behalf of everyone involved we thank you for your interest in our sale. We are proud to offer this set of bulls and heifers to you. We are not chasing fads or focusing on single traits that lose functionality. We continue to strive to breed cattle with a balanced EPD profile, natural muscling, sound structure, and phenotype. The bulls are developed in an environment that promotes longevity; high roughage rations with large amounts of exercise. We strive to produce quality that is bred on, not fed on.

We have continued to deepen our donor and herd sire line up and are using AI and ET very heavily. There are many groups of full brothers and half brothers. We believe that the cow behind the bull is just as important as the sire. Many of these bulls are out of first calf heifers with our newest genetics. Fertility and productivity of the females should not be overlooked. We would love to show you the bulls and the females behind them.

The Cattlemens Cut wants to earn your business. Customer service isn't a saying around here – it is what we are building our brand on. We are here to assist you in any way that we can. Whether than is any issue that arises with a bull, helping to market your feeder cattle, or questions about the EPD's and genomic testing; we are here to help in whatever way we can. Thank you very much for viewing our offering and we look forward to seeing you on March 14th, 2019 in Belleville, KS!

Sincerely, Jason & Katie Jagels

HERD HEALTH

CALVING - Inforce 3, Multimin 90, Calf Guard

EARLY PROCESSING (about 3 months) - Pyramid 5 + Presponse SQ, Ultrabac 7. Clostridium

WEANING (about 7 months) - Pyramid 5, Ultrabac 7, Cydectin, Safeguard

YEARLING (about 1 year) - Virashield 6 VL5, Vision 7, Cydectin Pour on, Safe Guard Dewormer, Multimin 90

Bulls have been semen checked by Dr. Cade Moses and Dr. Tyson Dinslage. They have been approved for breeding and passed the standards of 70% Morphology (shape) and 30% Motility (movement), as well as a minimum scrotal size of 30 cm.

VETERINARIAN

South Central Veterinary Clinic

Dr. Cade Moses

785-443-3683

Superior, Nebraska

THURSDAY, MARCH 14, 2019 | 1:00 PM CST

1

THE CATTLEMENS CUT



Quality Bred On, Not Fed On.

LOT 1



J Accelerate 8002

1

BULL REG: 19089617 DOB: 01/03/18 TAT: 8002

Rathbun Accelerate Z523
Hoffman Accelerate 5169
 JM Ms Final Answer 9058
 Musgrave Big Sky
J Elba 6002
 R T P Bismarck Elba 12

WMR Timeless 458
 Rathbun Heiress X686
 S A V Final Answer 0035
 FCR Ms Newsline 4426
 Connealy Earnan 076E
 SAV Primrose 7861
 S A V Bismarck 5682
 Sik Elba Rose 141605

Act BW
65
Adj WW
755
Adj YW
1409

CED	BW	WW	YW	SC	DOC	MILK
4	1.1	70	125	1.08	15	26
CW	MARB	RE	FAT	\$W	\$B	
55	0.31	0.54	-0.037	67.58	162.09	



RTP BISMARCK ELBA 12

8002 is an excellent herd sire prospect. Heavy muscled, smooth shouldered, and great on his feet and legs. His EPD profile is the balanced breeding approach we are striving for, he checks all the boxes. His dam bred back for a 368 day calving interval following her first calf. 8002's maternal grandam is our Bismarck donor. Phenotype, performance, and maternal excellence in this bull.

- Top 1% RADG, Top 5% YW, FAT, \$F, Top 10% WW, CEM, \$W, \$B, Top 15% MW, CW, Top 25% DMI, YH, SC, MH



Reference Sire

Hoffman Accelerate 5169

REG: 18131159 DOB: 02/15/2015 TAT: 5169

WMR Timeless 458
Rathbun Accelerate Z523
 Rathbun Heiress X686
 S A V Final Answer 0035
JM Ms Final Answer 9058
 FCR Ms Newsline 4426

Leachman Right Time 338-5605
 WMR Blackcap 521
 Boyd New Day 8005
 Rathbun Heiress M677
 Sitz Traveler 8180
 S A V Emulous 8145
 Lemmon Newsline C804
 Larks Miss Rito 1B2 5031

CED	BW	WW	YW	SC	DOC	MILK
5	1.3	75	127	1.23	19	25
CW	MARB	RE	FAT	\$W	\$B	
59	0.47	0.74	-0.011	78.12	170.36	

LOT 2



J Accelerate 8013

2 BULL REG: 19089622 DOB: 01/10/18 TAT: 8013

Rathbun Accelerate Z523
Hoffman Accelerate 5169
 JM Ms Final Answer 9058
 Deer Valley All In
GVC Dora D055
 GVC Dora B54

WMR Timeless 458
 Rathbun Heiress X686
 S A V Final Answer 0035
 FCR Ms Newsline 4426
 A A R Ten X 7008 S A
 Deer Valley Rita 0274
 Connealy KW 1664 Consensus
 GVC Dora X33

Act BW
75
Adj WW
760
Adj YW
1419

CED	BW	WW	YW	SC	DOC	MILK
3	1.7	75	136	0.70	8	22
CW	MARB	RE	FAT	\$W	\$B	
59	0.48	0.94	0.001	69.42	180.62	



CED	BW	WW	YW	DMI	YH	SC	DOC	HP	CEM	MLK	MW	MH	CW	MARB	RE	FAT	TEND
75	58	26	15	76	91	78	53	9	22	18	36	64	37	54	19	48	25

8013 is the second Accelerate son in this offering. We used Accelerate on our heifers and couldn't be happier with the results. 8013 is stout featured, sound, and extremely extended through his front end. Moderate birth weight with top end performance, this bull is a real spread bull. His dam had a calving interval of 369 days after her first calf. He has a WWR 106 and YWR 109.

- Top 1% RADG, \$F Top 2%YW,\$B Top 5% WW, RE Top 10% CW, \$W Top 25%DMI, MW, MH

J Accelerate 8001

3 BULL REG: 19089616 DOB: 01/03/18 TAT: 8001

Rathbun Accelerate Z523
Hoffman Accelerate 5169
 JM Ms Final Answer 9058
 Musgrave Big Sky
J Blackie Avala 6023
 JMc Blackie Avala 0319 4807

WMR Timeless 458
 Rathbun Heiress X686
 S A V Final Answer 0035
 FCR Ms Newsline 4426
 Connealy Earnan 076E
 SAV Primrose 7861
 Connealy Onward
 Blackie of Conanga 285 985

Act BW
73
Adj WW
743
Adj YW
1369

CED	BW	WW	YW	SC	DOC	MILK
4	2.7	67	115	0.76	26	25
CW	MARB	RE	FAT	\$W	\$B	
56	0.44	0.64	0.006	64.19	159.27	



CED	BW	WW	YW	DMI	YH	SC	DOC	HP	CEM	MLK	MW	MH	CW	MARB	RE	FAT	TEND
24	55	34	33	79	65	44	2	12	38	61	71	66	43	56	68	78	32

8001 is long bodied and heavy muscled. His Big Sky dam is an excellent young cow and we are excited for the future of these Big Sky females. Another very balanced Accelerate son who wraps performance, maternal focus, and carcass traits into an eye appealing package.

- Top 10%WW,Doc, CW, \$B Top 15%YW, YH,\$W, \$F Top 25% RADG
- WWR 103, YWR 105

J Accelerate 8005

4 BULL REG: 19089618 DOB: 01/06/18 TAT: 8005

Rathbun Accelerate Z523
Hoffman Accelerate 5169
 JM Ms Final Answer 9058
 BSF Opportunist Z5
J Ms Barbara 6072
 JM Ms Final Answer 2171

WMR Timeless 458
 Rathbun Heiress X686
 S A V Final Answer 0035
 FCR Ms Newsline 4426
 BSAR Opportunity 9114
 BSF Princess EL Cap W2
 S A V Final Answer 0035
 JM Ms Bando 9074-0098

Act BW
74
Adj WW
684
Adj YW
1295

CED	BW	WW	YW	SC	DOC	MILK
3	1.8	66	108	0.61	17	29
CW	MARB	RE	FAT	\$W	\$B	
41	0.67	0.77	-0.056	69.52	142.84	



CED	BW	WW	YW	DMI	YH	SC	DOC	HP	CEM	MLK	MW	MH	CW	MARB	RE	FAT	TEND
53	58	2	12	98	45	53	11	26	52	14	7	27	4	52	11	9	1

8005 is a very heavy muscled bull in a moderate package. Excelling above the breed average in all carcass traits. His mother was the youngest replacement heifer we kept, bred first cycle and calved with her second calf at a 372 day calving interval. The importance of the females behind these bulls cannot be overstated.

- Top 3% Fat, \$YG Top 10% \$W Top 15%WW, RE, \$G Top 25% YW,RADG, Milk,\$B

LOT 5



J Accelerate 8008

5

BULL REG: 19089620 DOB: 01/08/18 TAT: 8008

Rathbun Accelerate Z523
Hoffman Accelerate 5169
 JM Ms Final Answer 9058
 Musgrave Big Sky
J Elba 6004
 R T P Bismarck Elba 12

WMR Timeless 458
 Rathbun Heiress X686
 S A V Final Answer 0035
 FCR Ms Newsline 4426
 Connealy Earnan 076E
 SAV Primrose 7861
 S A V Bismarck 5682
 Sik Elba Rose 141605

Act BW
82
Adj WW
781
Adj YW
1403

8008 is another Accelerate x Big Sky and he is a perfect example of why the Big Sky daughters have us excited. He is a rugged made herd bull prospect; long bodied, full of red meat, but in a sound and smooth skeleton. A bull that checks all the boxes and will make a great herd bull. 8008's maternal grandam is our 12 Bismarck donor, the maternal genetics are high quality.

- Top 4% WW, \$F Top 10% YW Top 15%\$B Top 20%RADG, \$W
- WWR 108, YWR 107

CED	BW	WW	YW	SC	DOC	MILK
2	3.9	73	124	0.89	20	25
CW	MARB	RE	FAT	\$W	\$B	
44	0.56	0.54	0.001	61.61	151.79	



CED	BW	WW	YW	DMI	YH	SC	DOC	HP	CEM	MLK	MW	MH	CW	MARB	RE	FAT	TEND
53	58	2	12	98	45	53	11	26	52	14	7	27	4	52	11	9	1

J Accelerate 8058

6

BULL REG: 19089626 DOB: 02/13/18 TAT: 8058

Rathbun Accelerate Z523
Hoffman Accelerate 5169
 JM Ms Final Answer 9058
 GDAR Game Day 449
JM Ms Game Day 449 2176
 FCR Ms New Design 3044

WMR Timeless 458
 Rathbun Heiress X686
 S A V Final Answer 0035
 FCR Ms Newsline 4426
 Boyd New Day 8005
 G D A R Miss Wix 474
 Bon View New Design 878
 F C R Ms EXT 9176

Act BW
76
Adj WW
736
Adj YW
1354

CED	BW	WW	YW	SC	DOC	MILK
7	0.1	58	107	0.95	1	33
CW	MARB	RE	FAT	\$W	\$B	
44	0.43	0.32	0.050	68.90	125.16	



CED	BW	WW	YW	DMI	YH	SC	DOC	HP	CEM	MLK	MW	MH	CW	MARB	RE	FAT	TEND
21	26	40	7	88	59	11	32	18	18	5	87	83	45	58	85	98	2

A very well balanced bull. Extended through his front end, smooth shouldered, but stout made on a good set of feet and legs. A bull that couples in calving ease and performance in an easy to look at package. Recommended for Heifers.

- Top 10% Milk, \$W Top 25% BW, YW, YH
- BWR 96, WWR 102, YWR 103

J Accelerate 8066

7

BULL REG: 19100756 DOB: 02/16/18 TAT: 8066

Rathbun Accelerate Z523
Hoffman Accelerate 5169
 JM Ms Final Answer 9058

S A V Final Answer 0035
JM Ms Final Answer 0035 3223
 JM Ms Bando 9074 1141

WMR Timeless 458
 Rathbun Heiress X686
 S A V Final Answer 0035
 FCR Ms Newsline 4426
 Sitz Traveler 8180
 S A V Emulous 8145
 L T 598 Bando 9074
 FCR Ms Time 9113

Act BW
75
Adj WW
809
Adj YW
1345

CED	BW	WW	YW	SC	DOC	MILK
5	0.4	63	102	1.82	21	30
CW	MARB	RE	FAT	\$W	\$B	
46	0.55	0.36	0.045	76.88	136.25	



CED	BW	WW	YW	DMI	YH	SC	DOC	HP	CEM	MLK	MW	MH	CW	MARB	RE	FAT	TEND
24	16	57	74	89	92	19	1	11	34	16	80	89	69	54	83	78	4

8066 couples calving ease and performance together. The consistency in type and kind of these Accelerate bulls has us excited for his future. A balanced profile that will result in calves that will fit any end goal. Recommended for Heifers.

- Top 3% SC, \$W Top 20% WW, Milk
- BWR 95

LOT 8



8

J Accelerate 8006

BULL REG: 19089619 DOB: 01/07/18 TAT: 8006

| Rathbun Accelerate Z523
Hoffman Accelerate 5169
| JM Ms Final Answer 9058
| V A R Empire 3037
J Tara 6011
| R T P Consensus Tara 1942

WMR Timeless 458
Rathbun Heiress X686
S A V Final Answer 0035
FCR Ms Newline 4426
A A R Ten X 7008 S A
EXAR New Design 4212
Connealy Consensus 7229
JMc Queen Miya 9421 4510

Act BW
66
Adj WW
712
Adj YW
1317

CED	BW	WW	YW	SC	DOC	MILK
7	0.4	60	97	1.12	20	27
CW	MARB	RE	FAT	\$W	\$B	
44	0.60	0.67	-0.031	69.84	146.97	



CED	BW	WW	YW	DMI	YH	SC	DOC	HP	CEM	MLK	MW	MH	CW	MARB	RE	FAT	TEND
13	11	58	79	58	72	40	16	61	66	25	92	81	62	53	47	10	13

8006 is a striking herd bull prospect. Phenotypically striking, excellent feet and legs, smooth through his shoulder and front end with muscle to burn. He is extremely balanced in person and on paper. Excellent spread from birth to weaning. His young dam bred back for a calving interval of 362 days. Recommended for Heifers.

- Top 10% Fat, \$W Top 15% \$YG Top 20% \$B Top 25% WW, \$G
- BWR 94, YWR 101



LD Capitalist 316

REG: 17666102 DOB: 01/26/2013 TAT: 316

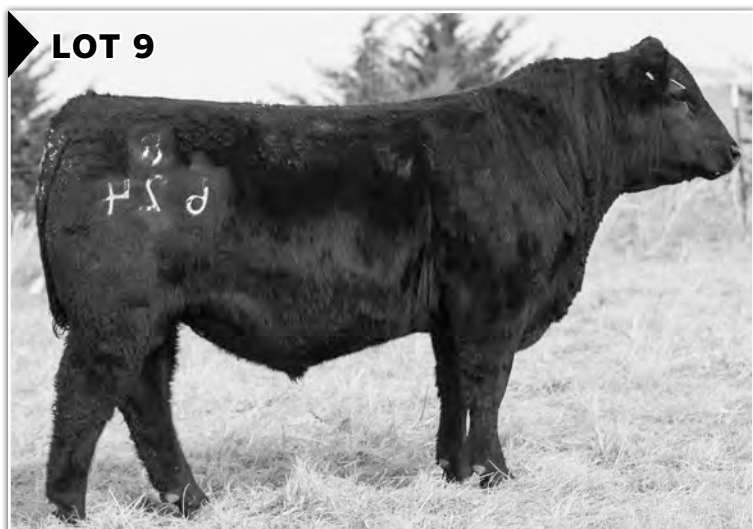
| S A V Final Answer 0035
Connealy Capitalist 028
| Prides Pita of Conanga 8821
| C A Future Direction 5321
LD Dixie Erica 2053
| LD Dixie Erica Oar 0853

Sitz Traveler 8180
S A V Emulous 8145
C R A Bextor 872 5205 608
Prides Trav of Conanga 6499
G A R Precision 1680
C A Miss Power Fix 308
LD Royce Onaroll 810
Dixie Erica of R R 8553

CED	BW	WW	YW	SC	DOC	MILK
15	-1.0	69	116	0.91	16	31
CW	MARB	RE	FAT	\$W	\$B	
44	0.57	0.57	0.050	77.99	136.95	

Capitalist 316 sons will keep your frame size down without giving up performance. If you like thick cattle, look at these sons.

LOT 9



9

RTP Capitalist 8624

BULL REG: 19310606 DOB: 02/09/18 TAT: 8624

| Connealy Capitalist 028
LD Capitalist 316
| LD Dixie Erica 2053
| Hart Cavalry 3034
RTP Elba Rose 624
| R T P Elba Rose 424

S A V Final Answer 0035
Prides Pita of Conanga 8821
C A Future Direction 5321
LD Dixie Erica Oar 0853
Connealy Cavalry 1149
Queen of Harts 1329
Connealy Black Granite
Sik Elba Rose 141605

Act BW
80
Adj WW
743
Adj YW
1340

CED	BW	WW	YW	SC	DOC	MILK
10	0.5	71	124	1.38	25	28
CW	MARB	RE	FAT	\$W	\$B	
49	0.51	0.52	0.036	76.27	143.89	

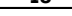


CED	BW	WW	YW	DMI	YH	SC	DOC	HP	CEM	MLK	MW	MH	CW	MARB	RE	FAT	TEND
1	5	37	35	81	87	8	56	19	29	17	94	87	19	62	50	93	24

Recommended for heifers. A real eye catcher here. Super smooth in his design and moves like a cat. Fantastic numbers in this really good bull. WWR 107. Dam's production WWR is 1@107.

10 RTP Capitalist 868**BULL REG: 19310591 DOB: 02/03/18 TAT: 868**

Connealy Capitalist 028	S A V Final Answer 0035	Act BW
LD Capitalist 316	Prides Pita of Conanga 8821	62
LD Dixie Erica 2053	C A Future Direction 5321	Adj WW
	LD Dixie Erica Oar 0853	734
R/M Turning Point 1C94	Connealy Consensus 7229	Adj YW
RTP Margaret TP 68	R/M Rita 9691	1321
RTP Margaret 833	Koupals B&B Balancer 4017	
	RTP 878 Margaret 233	

CED	BW		WW		YW		SC		DOC		MILK						
14	0.2		67		112		0.18		18		18						
CW	MARB		RE		FAT		\$W		\$B								
35	0.90		0.33		0.040		64.37		122.36								
CED	BW	WW	YW	DMI	YH	SC	DOC	HP	CEM	MLK	MW	MH	CW	MARB	RE	FAT	TEND
1	25	58	36	84	80	60	37	25	19	76	76	67	59	15	59	79	32

Recommended for Heifers. Really good bull here. Excellent growth in this son of Capitalist 316. His dam has a perfect udder. Keep every female out of this bull. WWR 105. Dam's production WWR is 1@105.

11 J Capitalist 8034**BULL REG: 19090434 DOB: 01/26/18 TAT: 8034**

Connealy Capitalist 028	S A V Final Answer 0035	Act BW
LD Capitalist 316	Prides Pita of Conanga 8821	67
LD Dixie Erica 2053	C A Future Direction 5321	Adj WW
	LD Dixie Erica Oar 0853	694
Connealy Consensus 7229	Connealy Consensus	Adj YW
BM Lucy 640 0987 CC	Blue Lilly of Conanga 16	1211
Basin Lucy 0987	Basin Max 602C	
	Basin Lucy 855A	


CED	BW	WW	YW	SC	DOC	MILK											
14	-0.6	59	102	1.11	15	29											
CW	MARB	RE	FAT	\$W	\$B	AGI											
37	0.74	0.24	0.081	66.27	117.55												
CED	BW	WW	YW	DMI	YH	SC	DOC	HP	CEM	MLK	MW	MH	CW	MARB	RE	FAT	TEND
1	15	33	27	81	63	13	87	46	52	29	63	73	44	23	66	92	29

8034 is a calving ease bull with excellent growth to follow. The 316 calves come small and have excellent growth to follow. His 7229 mother has a bright future. Moderate framed, heavy muscled, with added marbling. Recommended for Heifers.

- Top 4% CED, Top 10% \$W, Top 15% BW, Top 25% CEM, Milk, Marb, \$QG
- BWR 95

12 J Capitalist 8035**BULL REG: 19090433 DOB: 01/28/18 TAT: 8035**

Connealy Capitalist 028	S A V Final Answer 0035	Act BW
LD Capitalist 316	Prides Pita of Conanga 8821	77
LD Dixie Erica 2053	C A Future Direction 5321	Adj WW
	LD Dixie Erica Oar 0853	751
Connealy Consensus 7229	Connealy Consensus	Adj YW
BM Blackbird 614 414 CC	Blue Lilly of Conanga 16	1325
BM Blackbird 414 U2	BM Lights Out U2	
	BM Blackbird 114 33R Pro	


CED	BW	WW	YW	SC	DOC	MILK											
7	1.6	72	120	1.10	18	20											
CW	MARB	RE	FAT	\$W	\$B												
50	0.03	0.56	0.009	67.33	128.66												
CED	BW	WW	YW	DMI	YH	SC	DOC	HP	CEM	MLK	MW	MH	CW	MARB	RE	FAT	TEND
48	57	17	17	51	50	32	11	4	48	51	21	43	14	88	42	55	62

8035 is an exciting herd bull prospect. Extremely heavy muscled, heavy boned, sound on his feet, and smooth through his front third. This bull checks all the boxes when you see him and doesn't disappoint on paper. He is a great example of the balanced approach we are striving for. Moderate birth, great growth, excellent maternal traits, and an EPD profile to match.

- Top 5% WW Top 10% YW, \$W, \$F Top 15% CEM Top 20%CW
- WWR 104, YWR 101

13 RTP Capitalist 8646**BULL REG: 19310608 DOB: 02/09/18 TAT: 8646**

Connealy Capitalist 028	S A V Final Answer 0035	Act BW
LD Capitalist 316	Prides Pita of Conanga 8821	75
LD Dixie Erica 2053	C A Future Direction 5321	Adj WW
	LD Dixie Erica Oar 0853	774
Hart Cavalry 3034	Connealy Cavalry 1149	Adj YW
RTP Erica Cavalry 646	Queen of Harts 1329	1275
RTP Erica Return 465	Buford Full Return Y197	
	Mission Erica 6507 0830	

CED	BW	WW	YW	SC	DOC	MILK											
10	0.0	60	113	1.84	18	23											
CW	MARB	RE	FAT	\$W	\$B												
45	0.70	0.53	0.019	59.00	151.75												
CED	BW	WW	YW	DMI	YH	SC	DOC	HP	CEM	MLK	MW	MH	CW	MARB	RE	FAT	TEND
9	7	27	22	51	36	3	31	8	29	35	72	61	10	38	36	66	2

Recommended for heifers. Another really good Capitalist son here. These Capitalist sons have a lot of eye appeal in them. His dam is really going to be a good one. WWR 111. Dam's production WWR is 1@111.

LOT 12**VOLUME DISCOUNTS****2.5% DISCOUNT ON 2-5 BULLS****5% DISCOUNT ON 5 OR MORE BULLS****REPEAT BUYER DISCOUNT**

2.5% discount taken off of total charges for any buyer that has purchased a bull or heifer at our sale within the past two years.

LOT 14



14 RTP Capitalist 8080

BULL REG: 19310594 DOB: 02/18/18 TAT: 8080

| Connealy Capitalist 028

LD Capitalist 316

| LD Dixie Erica 2053

| WAR Architect T032 5002

R T P Ruth Hitect 080

| R T P Ruth 80

S A V Final Answer 0035

Prides Pita of Conanga 8821

C A Future Direction 5321

LD Dixie Erica Oar 0853

K C F Bennett Architect M299

WAR Ext 5002 6101 3087

R T P Lead Exon 5902

HPH 1417 Ruth 1012

Act BW

70

Adj WW

715

Adj YW

1259

CED	BW	WW	YW	SC	DOC	MILK
14	-2.3	55	92	0.56	19	27
CW	MARB	RE	FAT	\$W	\$B	
42	0.54	0.38	0.064	66.88	130.34	

CED	BW	WW	YW	DMI	YH	SC	DOC	HP	CEM	MLK	MW	MH	CW	MARB	RE	FAT	TEND
3	7	90	68	18	70	79	47	37	55	58	69	41	65	46	58	52	56

Recommended for heifers. Dam has produced several sons over the years that have made the sale. He's a deep soggy made bull that will add pounds. WWR 103. Dam's production WWR is 7@110.

HA Cowboy Up 5405

REG: 18286467 DOB: 01/30/2015 TAT: 5405

| KG Solution 0018

HA Outside 3008

| HA Ever Lady 1575

| Sitz Upward 307R

HA Blackcap Lady 1602

| HA Blackcap Lady 5515

MOGCK Sure Shot

KG Rito Lady 8724

S A V Bismarck 5682

HA Ever Lady 8066

Connealy Onward

Sitz Henrietta Pride 81M

E&b 4137 Dominett 814

HA Blackcap Lady 3833

CED	BW	WW	YW	SC	DOC	MILK
8	2.5	76	138	1.33	9	10
CW	MARB	RE	FAT	\$W	\$B	
62	0.33	0.54	-0.011	48.85	161.66	



Reference Sire



SANDPOINT LADY ERICA 3032

LOTS 15-20 FULL BROTHERS

The Cowboy Up progeny have been extremely popular and these flush brothers exemplify why. They are moderate framed, soggy and stout made beef bulls. You respect them for there combination of calving ease and performance in an eye appealing package. These flush brothers are out of our 3032 donor who is out of the great 7229. She has begun to make her mark with these progeny and will be a mainstay in our donor program. If you are looking for a group of brothers who are ready to work for a living, look no further!

15 J Cowboy Up 7551 ET**BULL** REG: 19082665 DOB: 09/09/17 TAT: 7551

HA Outside 3008
HA Cowboy Up 5405
 HA Blackcap Lady 1602
 Connealy Consensus 7229
SandPoint Lady Erica 3032
 SandPoint Lady Erica 0622

KG Solution 0018
 HA Ever Lady 1575
 Sitz Upward 307R
 HA Blackcap Lady 5515
 Connealy Consensus
 Blue Lilly of Conanga 16
 S A V Bismarck 5682
 E&B Lady Erica 128

Act BW
ET
Adj WW
ET
Adj YW
ET

CED	BW	WW	YW	SC	DOC	MILK
7	1.8	69	123	0.90	21	29
CW	MARB	RE	FAT	\$W	\$B	
43	0.63	0.04	0.039	69.21	139.96	

CED	BW	WW	YW	DMI	YH	SC	DOC	HP	CEM	MLK	MW	MH	CW	MARB	RE	FAT	TEND
15	29	41	18	76	74	30	38	76	82	19	73	70	39	40	94	85	5

- Top 10% WW, YW, \$W, \$F Top 20% Milk, MW, MH

LOT 15**16 J Cowboy Up 7520 ET****BULL** REG: 19082477 DOB: 09/06/17 TAT: 7520

HA Outside 3008
HA Cowboy Up 5405
 HA Blackcap Lady 1602
 Connealy Consensus 7229
SandPoint Lady Erica 3032
 SandPoint Lady Erica 0622

KG Solution 0018
 HA Ever Lady 1575
 Sitz Upward 307R
 HA Blackcap Lady 5515
 Connealy Consensus
 Blue Lilly of Conanga 16
 S A V Bismarck 5682
 E&B Lady Erica 128

Act BW
ET
Adj WW
ET
Adj YW
ET

CED	BW	WW	YW	SC	DOC	MILK
7	2.4	69	123	1.31	1	22
CW	MARB	RE	FAT	\$W	\$B	
43	0.50	0.04	0.046	63.60	133.47	

CED	BW	WW	YW	DMI	YH	SC	DOC	HP	CEM	MLK	MW	MH	CW	MARB	RE	FAT	TEND
23	37	72	46	49	84	11	63	36	54	46	90	92	62	66	97	96	5

- Top 10% WW, YW, \$F Top 15% \$W Top 20% SC

17 J Cowboy Up 7536 ET**BULL** REG: 19082663 DOB: 09/06/17 TAT: 7536

HA Outside 3008
HA Cowboy Up 5405
 HA Blackcap Lady 1602
 Connealy Consensus 7229
SandPoint Lady Erica 3032
 SandPoint Lady Erica 0622

KG Solution 0018
 HA Ever Lady 1575
 Sitz Upward 307R
 HA Blackcap Lady 5515
 Connealy Consensus
 Blue Lilly of Conanga 16
 S A V Bismarck 5682
 E&B Lady Erica 128

Act BW
ET
Adj WW
ET
Adj YW
ET

CED	BW	WW	YW	SC	DOC	MILK
16	-0.9	55	95	0.72	6	20
CW	MARB	RE	FAT	\$W	\$B	
21	0.55	0.00	-0.001	55.20	97.23	

CED	BW	WW	YW	DMI	YH	SC	DOC	HP	CEM	MLK	MW	MH	CW	MARB	RE	FAT	TEND
1	5	57	59	35	95	32	38	92	10	46	84	85	84	68	97	66	29

- Top 1% CED, CEM Top 10% BW Top 25% DMI, \$EN
- Recommended for Heifers.

LOT 18**18 J Cowboy Up 7244 ET****BULL** REG: 19082656 DOB: 09/03/17 TAT: 7244

HA Outside 3008
HA Cowboy Up 5405
 HA Blackcap Lady 1602
 Connealy Consensus 7229
SandPoint Lady Erica 3032
 SandPoint Lady Erica 0622

KG Solution 0018
 HA Ever Lady 1575
 Sitz Upward 307R
 HA Blackcap Lady 5515
 Connealy Consensus
 Blue Lilly of Conanga 16
 S A V Bismarck 5682
 E&B Lady Erica 128

Act BW
ET
Adj WW
ET
Adj YW
ET

CED	BW	WW	YW	SC	DOC	MILK
11	-0.3	62	105	-0.34	19	28
CW	MARB	RE	FAT	\$W	\$B	
41	0.47	-0.09	0.072	70.60	114.85	

CED	BW	WW	YW	DMI	YH	SC	DOC	HP	CEM	MLK	MW	MH	CW	MARB	RE	FAT	TEND
6	5	61	33	52	56	70	13	43	37	41	96	88	61	86	97	94	3

- Top 5% \$W Top 15% CED Top 20% BW, WW, Milk Top 25% CEM
- Recommended for Heifers.

19 J Cowboy Up 7539 ET

BULL	REG: 19082666	DOB: 09/07/17	TAT: 7539
HA Outside 3008	KG Solution 0018	Act BW	
HA Cowboy Up 5405	HA Ever Lady 1575	ET	
HA Blackcap Lady 1602	Sitz Upward 307R	Adj WW	
	HA Blackcap Lady 5515	ET	
Connealy Consensus 7229	Connealy Consensus	Adj YW	
SandPoint Lady Erica 3032	Blue Lilly of Conanga 16	ET	
SandPoint Lady Erica 0622	S A V Bismarck 5682		
	E&B Lady Erica 128		

CED	BW	WW	YW	SC	DOC	MILK
8	0.9	63	108	0.19	14	20
CW	MARB	RE	FAT	\$W	\$B	
34	0.73	0.20	0.031	60.19	116.47	AGI

CED	BW	WW	YW	DMI	YH	SC	DOC	HP	CEM	MLK	MW	MH	CW	MARB	RE	FAT	TEND
5	9	33	23	62	99	70	13	14	66	78	96	95	36	46	72	90	2

- Top 10% HP, Top 15% CEM, Top 20% WW, \$W, Top 25% YW, Marb, \$QG
- Recommended for Heifers.

LOT 21



LOT 22



20 J Cowboy Up 7550 ET

BULL	REG: 19082668	DOB: 09/08/17	TAT: 7550
HA Outside 3008	KG Solution 0018	Act BW	
HA Cowboy Up 5405	HA Ever Lady 1575	ET	
HA Blackcap Lady 1602	Sitz Upward 307R	Adj WW	
	HA Blackcap Lady 5515	ET	
Connealy Consensus 7229	Connealy Consensus	Adj YW	
SandPoint Lady Erica 3032	Blue Lilly of Conanga 16	ET	
SandPoint Lady Erica 0622	S A V Bismarck 5682		
	E&B Lady Erica 128		

CED	BW	WW	YW	SC	DOC	MILK
15	-0.8	51	98	0.56	13	23
CW	MARB	RE	FAT	\$W	\$B	
26	0.23	0.10	0.025	53.13	86.80	AGI

CED	BW	WW	YW	DMI	YH	SC	DOC	HP	CEM	MLK	MW	MH	CW	MARB	RE	FAT	TEND
2	4	86	71	38	86	60	35	33	23	31	90	78	78	94	81	71	3

- Top 2% CED, CEM Top 15% BW
- Recommended for Heifers.

21 J Cowboy Up 8016 ET

BULL	REG: 19090481	DOB: 01/16/18	TAT: 8016
HA Outside 3008	KG Solution 0018	Act BW	
HA Cowboy Up 5405	HA Ever Lady 1575	86	
HA Blackcap Lady 1602	Sitz Upward 307R	Adj WW	
	HA Blackcap Lady 5515	765	
Connealy Onward	Connealy Lead On	Adj YW	
JMc Happy Altune 9446 65	Altune of Conanga 6104	1255	
Hippie of Conanga 067	Connealy Forefront		
	Happala of Conanga 4090		

CED	BW	WW	YW	SC	DOC	MILK
10	-0.4	63	112	1.47	15	19
CW	MARB	RE	FAT	\$W	\$B	
43	-0.02	0.89	-0.020	64.55	110.12	AGI

CED	BW	WW	YW	DMI	YH	SC	DOC	HP	CEM	MLK	MW	MH	CW	MARB	RE	FAT	TEND
17	9	60	40	64	80	10	70	6	98	81	75	55	38	99	6	18	53

8016 is a big time spread bull out of our 944 Onward donor that originated from McKellar in Texas. Out of the offering there isn't a bull that combines calving ease, performance, scrotal, maternal excellence, and carcass into a smooth made package. He is an exciting herd bull prospect that does it all. Recommended for Heifers.

- Top 10% RE, \$YG Top 15% BW, SC, Fat, \$W Top 20% CED, WW, YW, HP Top 25% \$EN, \$F

22 J Cowboy Up 8018 ET

BULL	REG: 19090482	DOB: 01/16/18	TAT: 8018
HA Outside 3008	KG Solution 0018	Act BW	
HA Cowboy Up 5405	HA Ever Lady 1575	87	
HA Blackcap Lady 1602	Sitz Upward 307R	Adj WW	
	HA Blackcap Lady 5515	708	
Connealy Onward	Connealy Lead On	Adj YW	
JMc Happy Altune 9446 65	Altune of Conanga 6104	1292	
Hippie of Conanga 067	Connealy Forefront		
	Happala of Conanga 4090		

CED	BW	WW	YW	SC	DOC	MILK
10	1.8	64	108	0.46	17	19
CW	MARB	RE	FAT	\$W	\$B	
52	0.32	0.71	-0.019	54.51	144.17	AGI

CED	BW	WW	YW	DMI	YH	SC	DOC	HP	CEM	MLK	MW	MH	CW	MARB	RE	FAT	TEND
24	70	28	16	61	22	45	37	13	75	86	38	29	20	79	32	50	15

8018 is the second flush brother out of the 944 donor. Like his brother, he is an extremely well balanced herd bull that couples calving ease and performance into a heavy muscled package. He reads extremely well, and will add carcass traits in combination with his performance and maternal attributes. These two brothers would make a great pair of bulls.

- Top 10% HP, Top 15% WW, YH, MW, CW, Fat Top 20% CED, MH Top 25% YW, RE, \$YG, \$B

Musgrave Aviator

REG: 17264774 DOB: 01/30/2012 TAT: 542

| Sitz Upward 307R
Koupals B&B Identity
 | B&B Erica 605

| S A V Final Answer 0035
MCATL Forever Lady 1429-138
 | ALC Forever Lady R02S

Connealy Onward
 Sitz Henrietta Pride 81M
 G A R Exaltation 3144
 B&B Erica 4064
 Sitz Traveler 8180
 S A V Emulous 8145
 Leachman Right Time
 ALC Forever Lady K14P

CED	BW	WW	YW	SC	DOC	MILK
10	-1.8	50	92	1.21	13	27
CW	MARB	RE	FAT	\$W	\$B	
35	0.50	0.61	0.042	71.31	138.75	

**LOTS 23-27 FULL BROTHERS**

The Aviator progeny have been branded as been being the cowman's kind. Moderate framed, depth of body, and full of red meat and this set of brothers fits that description. They are out of our 96 donor who's bulls led off the sale last year and were very well received. This set of brothers is very well balanced in their EPD profile and will make top notch replacement heifers. A great opportunity to acquire a set of full brothers.

23 J Aviator 8031 ET

BULL REG: 19128883 DOB: 01/24/18 TAT: 8031

| Koupals B&B Identity
Musgrave Aviator
 | MCATL Forever Lady 1429-138
 | S A V 004 Predominant 4438
R T P Barbara Predom 96
 | R T P Barbara Front 526

Sitz Upward 307R
 B&B Erica 605
 S A V Final Answer 0035
 ALC Forever Lady R02S
 S A V 8180 Traveler 004
 S A V Emblynnette 1182
 B/R New Frontier 095
 R T P Barbara Flyer 526

Act BW
83
Adj WW
683
Adj YW
1259

CED	BW	WW	YW	SC	DOC	MILK
9	0.6	53	100	1.90	11	30
CW	MARB	RE	FAT	\$W	\$B	
49	0.59	0.59	0.000	59.82	164.00	

CED	BW	WW	YW	DMI	YH	SC	DOC	HP	CEM	MLK	MW	MH	CW	MARB	RE	FAT	TEND
55	44	74	61	16	46	4	38	54	3	39	91	58	82	52	34	22	35

- Top 1% CEM Top 3% SC Top 4% RADG Top 10% DMI, \$B Top 20% Milk, \$W, \$F Top 25% CW
- Recommended for Heifers.

**24 J Aviator 8027 ET**

BULL REG: 19128882 DOB: 01/21/18 TAT: 8027

| Koupals B&B Identity
Musgrave Aviator
 | MCATL Forever Lady 1429-138
 | S A V 004 Predominant 4438
R T P Barbara Predom 96
 | R T P Barbara Front 526

Sitz Upward 307R
 B&B Erica 605
 S A V Final Answer 0035
 ALC Forever Lady R02S
 S A V 8180 Traveler 004
 S A V Emblynnette 1182
 B/R New Frontier 095
 R T P Barbara Flyer 526

Act BW
82
Adj WW
751
Adj YW
1282

CED	BW	WW	YW	SC	DOC	MILK
2	1.9	55	98	1.52	13	31
CW	MARB	RE	FAT	\$W	\$B	
48	0.54	0.47	0.012	63.32	151.78	

CED	BW	WW	YW	DMI	YH	SC	DOC	HP	CEM	MLK	MW	MH	CW	MARB	RE	FAT	TEND
94	86	36	38	15	72	3	7	1	47	29	84	62	64	82	46	39	31

- Top 10% SC, Milk Top 15% HP, \$W, \$B, Top 20% RADG, DMI, Top 25% CW

25 J Aviator 8049 ET

BULL REG: 19128885 DOB: 02/10/18 TAT: 8049

| Koupals B&B Identity
Musgrave Aviator
 | MCATL Forever Lady 1429-138
 | S A V 004 Predominant 4438
R T P Barbara Predom 96
 | R T P Barbara Front 526

Sitz Upward 307R
 B&B Erica 605
 S A V Final Answer 0035
 ALC Forever Lady R02S
 S A V 8180 Traveler 004
 S A V Emblynnette 1182
 B/R New Frontier 095
 R T P Barbara Flyer 526

Act BW
80
Adj WW
652
Adj YW
1180

CED	BW	WW	YW	SC	DOC	MILK
6	1.2	53	98	1.06	16	28
CW	MARB	RE	FAT	\$W	\$B	
50	0.59	0.50	0.027	56.02	163.80	

CED	BW	WW	YW	DMI	YH	SC	DOC	HP	CEM	MLK	MW	MH	CW	MARB	RE	FAT	TEND
73	79	27	27	18	46	15	46	9	10	38	64	27	40	70	24	51	5

- Top 5% RADG, DMI, Top 10% \$B, Top 15% CEM, Top 20% YH, HP, Milk, CW, \$F, Top 25% MH

LOT 26



26

J Aviator 8059 ET

BULL REG: 19128887 DOB: 02/14/18 TAT: 8059

Koupals B&B Identity
Musgrave Aviator
MCATL Forever Lady 1429-138
S A V 004 Predominant 4438
R T P Barbara Predom 96
R T P Barbara Front 526

Sitz Upward 307R
B&B Erica 605
S A V Final Answer 0035
ALC Forever Lady R02S
S A V 8180 Traveler 004
S A V Emblynette 1182
B/R New Frontier 095
R T P Barbara Flyer 526

Act BW
81
Adj WW
706
Adj YW
1300

CED	BW	WW	YW	SC	DOC	MILK
3	1.5	56	93	1.55	11	23
CW	MARB	RE	FAT	\$W	\$B	
39	0.58	0.55	0.004	59.04	133.89	

CED	BW	WW	YW	DMI	YH	SC	DOC	HP	CEM	MLK	MW	MH	CW	MARB	RE	FAT	TEND
64	58	25	23	33	59	2	29	8	23	70	63	53	44	81	11	42	25

- Top 10% SC Top 25%HP, \$EN,\$W

27

J Aviator 7108 ET

BULL REG: 19100790 DOB: 09/07/17 TAT: 7108

Koupals B&B Identity
Musgrave Aviator
MCATL Forever Lady 1429-138
S A V 004 Predominant 4438
R T P Barbara Predom 96
R T P Barbara Front 526

Sitz Upward 307R
B&B Erica 605
S A V Final Answer 0035
ALC Forever Lady R02S
S A V 8180 Traveler 004
S A V Emblynette 1182
B/R New Frontier 095
R T P Barbara Flyer 526

Act BW
ET
Adj WW
ET
Adj YW
ET

CED	BW	WW	YW	SC	DOC	MILK
8	1.2	54	98	1.46	2	30
CW	MARB	RE	FAT	\$W	\$B	
40	0.64	0.27	0.008	61.70	151.90	

CED	BW	WW	YW	DMI	YH	SC	DOC	HP	CEM	MLK	MW	MH	CW	MARB	RE	FAT	TEND
76	50	74	86	1	50	16	84	51	19	63	97	70	90	56	76	74	25

- Top 2% RADG, DMI, Top 4% CEM, Top 15% SC, Milk, \$B, Top 20% \$W, \$F, Top 25% MH

28

J Aviator 8020

BULL REG: 19342515 DOB: 01/16/18 TAT: 8020

Koupals B&B Identity
Musgrave Aviator
MCATL Forever Lady 1429-138
Bushs Unbelievable423
Nelson Blackbird 6658
Nelson Blackbird 5258

Sitz Upward 307R
B&B Erica 605
S A V Final Answer 0035
ALC Forever Lady R02S
S A V Bismarck 5682
Bushs Blackbird 8708
Famous 7001
TC Blackbird 2078

Act BW
74
Adj WW
Adj YW

CED	BW	WW	YW	SC	DOC	MILK
4	0.3	45	81	0.57	15	28
CW	MARB	RE	FAT	\$W	\$B	
30	0.50	0.48	0.009	54.18	134.25	

CED	BW	WW	YW	DMI	YH	SC	DOC	HP	CEM	MLK	MW	MH	CW	MARB	RE	FAT	TEND
71	23	94	78	1	87	41	19	18	62	36	98	95	92	57	63	51	28

Another Aviator son that carries on his sire's attributes. 8020 is moderate framed but extremely stout, yet smooth through his shoulder and neck. He adds style to his pedigree and will sire females that will be highly sought after.



LOT 29



J Resource 7106 ET

29 BULL REG: 19148038 DOB: 09/07/17 TAT: 7106

Rito 707 of Ideal 3407 7075

S A V Resource 1441

S A V Blackcap May 4136

S A V Bismarck 5682

R T P Bismarck Elba 12

Sik Elba Rose 141605

R R Rito 707

Ideal 3407 of 1418 076

S A V 8180 Traveler 004

S A V May 2397

G A R Grid Maker

S A V Abigale 0451

TC Freedom 104

Siks New Design 14160

Act BW

ET

Adj WW

ET

Adj YW

ET

CED	BW	WW	YW	SC	DOC	MILK
4	3.6	71	129	0.58	12	21
CW	MARB	RE	FAT	\$W	\$B	
53	0.16	0.90	-0.025	55.55	140.99	

CED	BW	WW	YW	DMI	YH	SC	DOC	HP	CEM	MLK	MW	MH	CW	MARB	RE	FAT	TEND
72	62	9	12	89	87	70	86	40	74	85	14	67	15	88	9	36	71



RTP BISMARCK ELBA 12

7106 is an exciting herd bull prospect out of our 12 Bismarck donor. He is the stoutest bull in the offering and offers top of the breed performance to go with it. 7106 combines this in a moderate package and will sire feeder cattle and heifers that will be equally desirable. This bull does a lot of things right, don't overlook him.

- Top 5% WW, YW, \$F, Top 10% MW, RE, \$YG, Top 15% CW, Fat Top 25% RADG, \$B

30 R T P Double X L 8333 {DDC}

BULL REG: 19353975 DOB: 02/08/18 TAT: 8333

A A R Ten X 7008 S A

M A R Double XL 320

CAR Miss Amy 591

Cherry Crk Higher Standard

R T P Margaret H5 333

R T P Margaret 833

Mytty In Focus

A A R Lady Kelton 5551

Hyline Right Time 338

CAR Miss Amy 121

LCC New Standard

Ms CCR Dianna 3257 5372 M

Koupals B&B Balancer 4017

R T P 878 Margaret 233

Act BW

70

Adj WW

693

Adj YW

1242

CED	BW	WW	YW	SC	DOC	MILK
18	-3.2	39	76	0.41	-1	16
CW	MARB	RE	FAT	\$W	\$B	
25	0.47	-0.03	0.042	38.12	89.36	

CED	BW	WW	YW	DMI	YH	SC	DOC	HP	CEM	MLK	MW	MH	CW	MARB	RE	FAT	TEND
1	1	98	69	46	90	54	86	26	64	87	100	98	96	59	100	79	12



Recommended for heifers. A sleep all night calving ease bull here. WWR 100, YWR 100.

31 RTP Double XL 843

BULL REG: 19310588 DOB: 02/01/18 TAT: 843

A A R Ten X 7008 S A

M A R Double XL 320

CAR Miss Amy 591

Buford Full Return Y197

R T P Blackcap Return 43

R T P Blackcap Con 033

Mytty In Focus

A A R Lady Kelton 5551

Hyline Right Time 338

CAR Miss Amy 121

MF Net Return 8197

J Bar 7 Enchantress 7217

Connealy Contrast

R T P Blackcap Trend 33

Act BW

55

Adj WW

691

Adj YW

1187

CED	BW	WW	YW	SC	DOC	MILK
17	-2.4	51	93	0.41	20	26
CW	MARB	RE	FAT	\$W	\$B	
43	0.65	0.48	0.020	58.40	145.53	

CED	BW	WW	YW	DMI	YH	SC	DOC	HP	CEM	MLK	MW	MH	CW	MARB	RE	FAT	TEND
6	15	73	71	21	79	63	38	22	62	18	87	75	56	62	25	26	3



Recommended for heifers. WWR 99.



Barstow Cash

REG: 17145326 DOB: 01/28/2011 TAT: Y18

| Sitz Upward 307R
Sitz Dash 10277
 | Sitz Everelda Entense 2665
 | S A V Final Answer 0035
Barstow Queen W16
 | RCA Queen R42

Connealy Onward
 Sitz Henrietta Pride 81M
 O C C Emblazon 854E
 Sitz Everelda Entense 4948
 Sitz Traveler 8180
 S A V Emulous 8145
 TC Patriot 337
 RCA Queen 1231

CED	BW	WW	YW	SC	DOC	MILK
11	0.5	63	122	1.50	24	18
CW	MARB	RE	FAT	\$W	\$B	
45	0.27	0.90	0.020	52.34	122.07	

LOT 32



J Cash 8017

32 BULL REG: 19089623 DOB: 01/16/18 TAT: 8017

| Sitz Dash 10277
Barstow Cash
 | Barstow Queen W16
 | Connealy Consensus 7229
R T P Consensus Tara 1942
 | JMc Queen Miya 9421 4510

Sitz Upward 307R
 Sitz Everelda Entense 2665
 S A V Final Answer 0035
 RCA Queen R42
 Connealy Consensus
 Blue Lilly of Conanga 16
 S A V Final Answer 0035
 JMc Queen Mina 4510 3282

Act BW
85
Adj WW
772
Adj YW
1356

CED	BW	WW	YW	SC	DOC	MILK
10	0.5	56	97	1.71	12	24
CW	MARB	RE	FAT	\$W	\$B	
40	0.53	0.71	-0.003	62.93	135.25	

CED	BW	WW	YW	DMI	YH	SC	DOC	HP	CEM	MLK	MW	MH	CW	MARB	RE	FAT	TEND
65	55	63	80	83	86	14	41	27	45	51	85	82	60	47	51	58	28

8017 is a very exciting herd bull prospect. It is hard to make a bull that stout, sound, soft, and yet extended through his front end. He is the epitome of why we have liked the Cash cattle, full of performance and red meat in an extremely attractive package. 8017's dam raised the high selling bull last year. She has a calving interval of 359 days on 5 calves, she hits every time. She has entered our donor pen and this bull shows you why. Recommended for Heifers.

- Top 5% SC Top 10% HP, Top 15% \$W Top 20% CED, Top 25% RADG, \$EN, RE, \$YG
- WWR 107, YWR 104

J Cash 8077

33 BULL REG: 19129058 DOB: 02/24/18 TAT: 8077

| Barstow Cash
H Cash 4081 Et
 | K Bar D Wendy K1T
 | Connealy In Focus 463A
R T P Barbara C I F 196
 | R T P Barbara Predom 96

Sitz Dash 10277
 Barstow Queen W16
 BR Midland
 Double Bar Wendy 9A
 Mytty In Focus
 Piece of Conanga 75
 S A V 004 Predominant 4438
 R T P Barbara Front 526

Act BW
78
Adj WW
721
Adj YW
1246

CED	BW	WW	YW	SC	DOC	MILK
3	3.4	48	82	1.15	1	18
CW	MARB	RE	FAT	\$W	\$B	
22	0.41	0.59	0.016	36.39	85.23	

CED	BW	WW	YW	DMI	YH	SC	DOC	HP	CEM	MLK	MW	MH	CW	MARB	RE	FAT	TEND
93	99	76	65	80	27	12	87	29	10	93	72	47	66	58	35	52	32

8077 is the youngest bull in the offering but that doesn't mean he is short on quality. He is a full brother to the high selling bull two years ago and the report from his brother has been fantastic. His mother is an outstanding producer that had a high selling heifer on last years sale, she gets it done every year.

- Top 10% \$EN Top 20% YH Top 25% SC, \$YG


34 J Cash 8056

BULL REG: 19100757 DOB: 02/12/18 TAT: 8056

| Sitz Dash 10277
Barstow Cash
| Barstow Queen W16
| S A V Bismarck 5682
H Cynthia 3325 Et
| 21AR Sara E802

Sitz Upward 307R
Sitz Everelda Entense 2665
S A V Final Answer 0035
RCA Queen R42
G A R Grid Maker
S A V Abigale 0451
B C C Bushwacker 41-93
21 A R Sara 802

Act BW
77
Adj WW
695
Adj YW
1237

CED	BW	WW	YW	SC	DOC	MILK
9	1.3	61	116	1.67	25	28
CW	MARB	RE	FAT	\$W	\$B	
43	0.16	0.56	0.040	63.25	110.34	

CED	BW	WW	YW	DMI	YH	SC	DOC	HP	CEM	MLK	MW	MH	CW	MARB	RE	FAT	TEND
29	72	8	4	88	45	4	3	50	39	38	41	45	12	85	29	92	35



8056 is another stout featured Cash son. He is a very attractive stout featured bull that combines moderate birth with excellent performance. His Bismarck dam has been a consistent producer and has a calving interval of 371 days on 4 calves. This big scrotal bull checks all the boxes.

- Top 10% SC Top 15% Doc, YW, \$W Top 20% Milk, \$F Top 25% WW, HP
- BWR 97

LOT 34



Basin Payweight 1682



Top selling Payweight 1682 son at the Brookdale sale. Performance with a moderate frame. Check out his EPDs and \$B value!

Brookdale Payweight 185

REG: 18223475 DOB: 01/29/2015 TAT: 185

| Basin Payweight 006S
Basin Payweight 1682
| 21AR O Lass 7017
| S A V Final Answer 0035
Brookdale Blackcap 243
| Brookdale Blackcap 401

Vermilion Payweight J847
Basin Lucy 3829
HARB Pendleton 765 J H
21AR O Lass F24A
Sitz Traveler 8180
S A V Emulous 8145
Sitz Upward 307R
ALC Blackcap 33N

CED	BW	WW	YW	SC	DOC	MILK
7	0.5	64	115	2.21	28	34
CW	MARB	RE	FAT	\$W	\$B	
49	0.49	0.50	0.062	76.26	151.97	


35 RTP Payweight 8126

BULL REG: 19310595 DOB: 01/26/18 TAT: 8126

| Basin Payweight 1682
Brookdale Payweight 185
| Brookdale Blackcap 243
| Basin Super Max 6628
SandPoint BemindfulMaid 1263
| SandPoint BemindfulMaid 5492

Basin Payweight 006S
21AR O Lass 7017
S A V Final Answer 0035
Brookdale Blackcap 401
Basin Max W325
Basin Heather Bloom S302
Sitz Alliance 6595
WAR Bando 6006 598 4053

Act BW
68
Adj WW
745
Adj YW
1332

CED	BW	WW	YW	SC	DOC	MILK											
12	-1.7	60	105	1.02	19	37											
CW	MARB	RE	FAT	\$W	\$B												
46	0.79	0.69	0.040	81.17	161.06												
CED	BW	WW	YW	DMI	YH	SC	DOC	HP	CEM	MLK	MW	MH	CW	MARB	RE	FAT	TEND
71	41	20	34	6	73	52	17	10	76	21	72	86	60	27	44	80	10



A big stout Payweight son here. He'll sire pounds at weaning time and keep his daughters. WWR 107, YWR 107. Dam's production WWR is 6@103.

LOT 35



36 RTP Payweight 8312

BULL	REG: 19310597	DOB: 01/28/18	TAT: 8312
Basin Payweight 1682	Basin Payweight 006S	Act BW	
Brookdale Payweight 185	21AR O Lass 7017	65	
Brookdale Blackcap 243	S A V Final Answer 0035	Adj WW	
CAR Efficient 534	Brookdale Blackcap 401	677	
KFS 121 Efficient-364	K C F Bennett Efficient	Adj YW	
KFS 725-ND458N-121	CAR Miss Susie 308	1338	
	Sitz New Design 458N		
	KFS 397 Leadon 725		

CED	BW	WW	YW	SC	DOC	MILK
9	0.1	61	104	1.50	26	29
CW	MARB	RE	FAT	\$W	\$B	
37	0.73	0.44	0.029	73.35	136.29	

CED	BW	WW	YW	DMI	YH	SC	DOC	HP	CEM	MLK	MW	MH	CW	MARB	RE	FAT	TEND
65	49	31	42	26	63	13	4	38	35	14	77	79	55	54	80	66	3

A bigger framed Payweight son that will really put the pounds in his calves. Extra horsepower in this good bull. YWR 107. Dam's production WWR is 4@99.

37 R T P Pay WT 313B {DDC}

BULL	REG: 19355422	DOB: 02/01/18	TAT: 8625
Basin Payweight 1682	Basin Payweight 006S	Act BW	
High Point Pay Out 658	21AR O Lass 7017	62	
High Point Erica 4135	Sitz Dollar Up 489Z	Adj WW	
Cherry Crk Higher Standard	High Point Erica 745	734	
R T P Blackie H5 313	LCC New Standard	Adj YW	
JMc Blackie Altune 0313 4807	Ms CCR Dianna 3257 5372 M	1278	
	Connealy Onward		
	Blackie of Conanga 285 985		

CED	BW	WW	YW	SC	DOC	MILK
15	-0.5	52	97	0.94	18	35
CW	MARB	RE	FAT	\$W	\$B	
42	0.71	0.41	0.045	67.67	134.18	

Good growth bull here. His dam has a tremendous bull by Cowboy Up on the ground this year. WWR 108. Dam's production WWR is 3@103.

LOT 38



38 RTP Payweight 8495

BULL	REG: 19310599	DOB: 02/12/18	TAT: 8495
Basin Payweight 1682	Basin Payweight 006S	Act BW	
Brookdale Payweight 185	21AR O Lass 7017	90	
Brookdale Blackcap 243	S A V Final Answer 0035	Adj WW	
Mc Hoover Dam 1108	Brookdale Blackcap 401	718	
R T P Erica Dam 495	Hoover Dam	Adj YW	
R T P Erica Predom 95	Miss MCK Lead ON 5009	1241	
	S A V 004 Predominant 4438		
	R T P New Trend Erica 15		

CED	BW	WW	YW	SC	DOC	MILK
-5	4.9	71	120	1.22	23	28
CW	MARB	RE	FAT	\$W	\$B	
56	0.39	0.63	-0.002	65.58	165.62	

CED	BW	WW	YW	DMI	YH	SC	DOC	HP	CEM	MLK	MW	MH	CW	MARB	RE	FAT	TEND
81	95	27	77	13	66	20	6	70	84	9	77	38	13	80	24	12	26

A good strong heavy muscled son of Payweight. His E.P.D. numbers make him a good use on your cows. WWR 103.

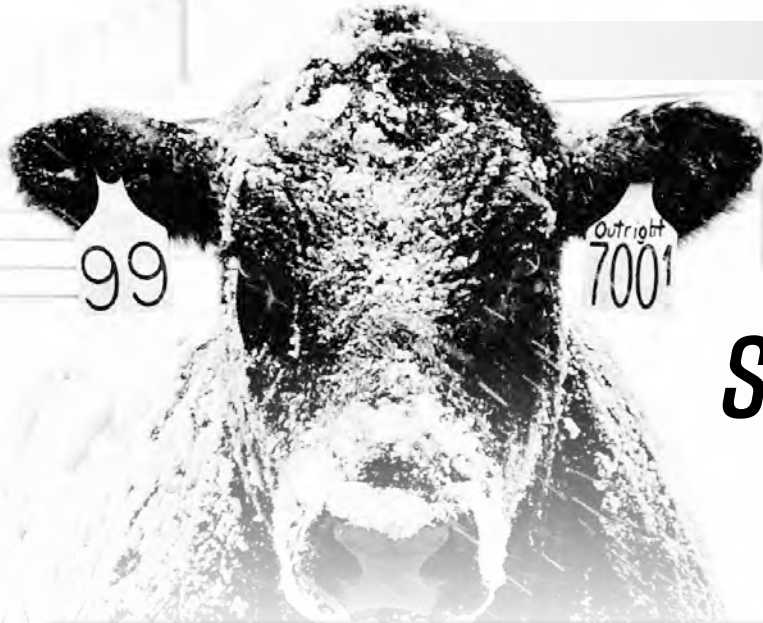
39 RTP Payweight 8522

BULL	REG: 19310601	DOB: 02/09/18	TAT: 8522
Basin Payweight 1682	Basin Payweight 006S	Act BW	
Brookdale Payweight 185	21AR O Lass 7017	70	
Brookdale Blackcap 243	S A V Final Answer 0035	Adj WW	
Hart Cavalry 3034	Brookdale Blackcap 401	743	
R T P Edella FA 522	Connealy Cavalry 1149	Adj YW	
R T P Edella FA52 322	Queen of Harts 1329	1202	
	JMc Answer 9452 529B		
	R T P Edella Atlas 122		

CED	BW	WW	YW	SC	DOC	MILK
11	-1.3	46	83	1.75	14	33
CW	MARB	RE	FAT	\$W	\$B	
35	0.62	0.71	0.029	61.65	128.85	

CED	BW	WW	YW	DMI	YH	SC	DOC	HP	CEM	MLK	MW	MH	CW	MARB	RE	FAT	TEND
10	3	79	85	42	96	7	32	52	19	2	95	95	67	45	62	84	18

Recommended for heifers. An attractive looking bull here. His mother is the perfect sized cow with a great udder. WWR 107. Dam's production WWR is 2@107.



QUALITY STARTS WITH THE COW.

LOT 42



40

J Happy Altune 8014 ET

COW REG: 19229020 DOB: 01/12/18 TAT: 8014

| HA Outside 3008
HA Cowboy Up 5405
| HA Blackcap Lady 1602

| Connealy Onward
JMc Happy Altune 9446 65
| Hippie of Conanga 067

KG Solution 0018
HA Ever Lady 1575
Sitz Upward 307R
HA Blackcap Lady 5515
Connealy Lead On
Altune of Conanga 6104
Connealy Forefront
Happala of Conanga 4090

Act BW

84

Adj WW

668

CED	BW	WW	YW	SC	DOC	MILK
9	0.9	71	123	0.47	15	16
CW	MARB	RE	FAT	\$W	\$B	
48	0.38	0.64	-0.013	60.97	138.17	

CED	BW	WW	YW	DMI	YH	SC	DOC	HP	CEM	MLK	MW	MH	CW	MARB	RE	FAT	TEND
16	24	18	9	37	68	36	38	2	91	47	30	35	20	83	19	52	7



8014 is an exciting female to lead off the heifers. She is a Cowboy Up out of our 944 donor that has been a mainstay in the donor program. In striving to produce functional females that combine balanced EPD's in a striking phenotype this heifer rises to the top. I think her potential to raise both bulls and females is very exciting. We want to offer you females off the top of the crop and this female certainly is. Full brothers to 8014 sell as Lot 21 and 22.

- Top 2% HP Top 4%WW Top 5%YW Top 10%\$F Top 15%\$W Top 25% CED, MW, CW, Fat

LOT 41



41 J Lady Erica 8009

COW REG: 19199743 **DOB:** 01/09/18 **TAT:** 8009

| Sitz Dash 10277
Barstow Cash
 | Barstow Queen W16
 | Connealy Consensus 7229
SandPoint Lady Erica 3032
 | SandPoint Lady Erica 0622

Sitz Upward 307R
 Sitz Everelda Entense 2665
 S A V Final Answer 0035
 RCA Queen R42
 Connealy Consensus
 Blue Lilly of Conanga 16
 S A V Bismarck 5682
 E&B Lady Erica 128

Act BW
67
Adj WW
632

CED	BW	WW	YW	SC	DOC	MILK
14	-1.3	54	102	0.70	18	28
CW	MARB	RE	FAT	\$W	\$B	
23	0.53	0.58	0.056	60.42	92.77	



CED	BW	WW	YW	DMI	YH	SC	DOC	HP	CEM	MLK	MW	MH	CW	MARB	RE	FAT	TEND
28	16	60	36	71	42	18	45	12	87	42	82	73	77	59	44	93	44

SANDPOINT LADY ERICA 3032

8009 is the first heifer we have offered out of the 3032 donor, who's Cowboy Up bulls sell as Lot 15-20. 8009 is extremely well patterned and offers unlimited mating flexibility. She offers breed leading calving ease and maternal traits in an eye appealing package. 8009 has a bright future ahead of her.

- Top 3% CED Top 4% HP Top 10% BW Top 15% \$W Top 20% Milk Top 25% CEM
- BWR 91

LOT 42



42 J Gloria 8019

COW REG: 19199744 **DOB:** 01/16/18 **TAT:** 8019

| Sitz Dash 10277
Barstow Cash
 | Barstow Queen W16
 | S Chisum 6175
JM Ms Chisum 6175 2182
 | JM MS Final Answer 8010

Sitz Upward 307R
 Sitz Everelda Entense 2665
 S A V Final Answer 0035
 RCA Queen R42
 S Alliance 3313
 S Gloria 464
 S A V Final Answer 0035
 Larks Miss Ext 6544

Act BW
75
Adj WW
656

CED	BW	WW	YW	SC	DOC	MILK
8	0.2	76	135	2.24	31	25
CW	MARB	RE	FAT	\$W	\$B	
56	0.08	0.90	0.032	77.85	131.08	



CED	BW	WW	YW	DMI	YH	SC	DOC	HP	CEM	MLK	MW	MH	CW	MARB	RE	FAT	TEND
57	52	10	5	96	55	1	2	8	16	44	68	76	15	93	10	74	46

8019 is another heifer off the top of our replacement pen. She combines calving ease and breed leading performance in a moderate framed, eye appealing package. Her Chisum dam has been a very consistent producer for us with a calving Interval of 355 days on 5 calves. 8019 offers unlimited mating flexibility and will be a top notch producer.

- Top 1% SC Top 2% WW, YW, Doc, \$W Top 3% \$F Top 10% CW, RE Top 25% BW

43

J Evergreen 8022**COW** REG: 19199742 **DOB:** 01/17/18 **TAT:** 8022

| Sitz Dash 10277
Barstow Cash
 | Barstow Queen W16
 | Connealy Consensus 7229
Gana Evergreen 821B
 | Sandpoint Evergreen 8217

Sitz Upward 307R
 Sitz Everelda Entense 2665
 S A V Final Answer 0035
 RCA Queen R42
 Connealy Consensus
 Blue Lilly of Conanga 16
 S A V Bachelor 4404
 SandPoint Evergreen 4137

Act BW

76

Adj WW

634

CED	BW	WW	YW	SC	DOC	MILK
7	0.9	61	110	1.14	19	20
CW	MARB	RE	FAT	\$W	\$B	
35	0.49	0.63	0.020	64.10	112.38	

CED	BW	WW	YW	DMI	YH	SC	DOC	HP	CEM	MLK	MW	MH	CW	MARB	RE	FAT	TEND
56	39	39	48	95	85	38	25	13	49	56	94	90	52	88	26	73	33

- Top 10% \$W Top 15% YW Top 20% WW, \$EN Top 25% SC

DVAuction

Broadcasting Real-Time Auctions

Videos of the sale lots can be found at
DVAUCTION.COM. Online and proxy bidding also
 available if you are unable to attend the sale.

LOT 44

44

J Evergreen 8015**COW** REG: 19196726 **DOB:** 01/14/18 **TAT:** 8015

| Rathbun Accelerate Z523
Hoffman Accelerate 5169
 | JM Ms Final Answer 9058
 | V A R Empire 3037
J Evergreen 6001
 | Gana Evergreen 821B

WMR Timeless 458
 Rathbun Heiress X686
 S A V Final Answer 0035
 FCR Ms Newsline 4426
 A A R Ten X 7008 S A
 EXAR New Design 4212
 Connealy Consensus 7229
 Sandpoint Evergreen 8217

Act BW**Adj WW**

633

CED	BW	WW	YW	SC	DOC	MILK
7	1.0	51	95	1.64	3	24
CW	MARB	RE	FAT	\$W	\$B	
35	0.34	0.83	-0.071	52.15	126.42	

CED	BW	WW	YW	DMI	YH	SC	DOC	HP	CEM	MLK	MW	MH	CW	MARB	RE	FAT	TEND
80	23	56	59	63	72	19	87	5	56	63	83	90	71	48	19	2	21

We led off the sale with an exciting group of Accelerate sons, but the mark of every good bull is in his daughters. So we wanted to offer two daughters as well. 8015 is out a first calf heifer that bred back with a calving interval of 367 days after her first calf. She offers a very balanced profile with a striking phenotype.

- Top 1% Fat, \$YG Top 4% RADG Top 10% SC Top 15% RE Top 25% DMI

45

J Lady 8064**COW** REG: 19196731 **DOB:** 02/15/18 **TAT:** 8064

| Rathbun Accelerate Z523
Hoffman Accelerate 5169
 | JM Ms Final Answer 9058
 | R T P Bismark Atlas 9551
R T P Atlas Lady 127
 | R T P Frontier Lady 527

WMR Timeless 458
 Rathbun Heiress X686
 S A V Final Answer 0035
 FCR Ms Newsline 4426
 S A V Bismarck 5682
 R T P New Blackbird 551
 B/R New Frontier 095
 R T P Lady Treasa 27

Act BW

79

Adj WW

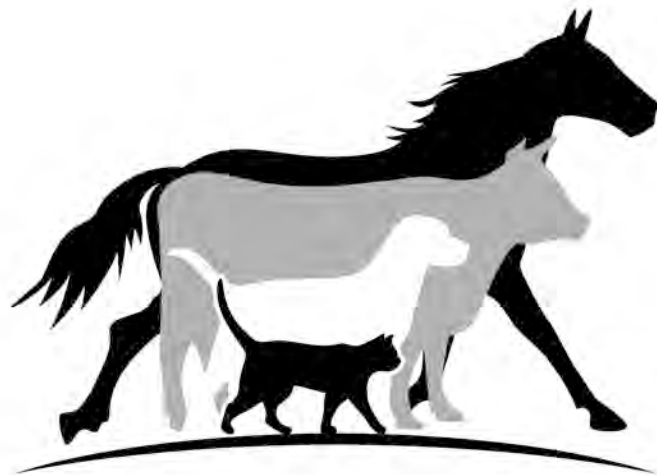
677

CED	BW	WW	YW	SC	DOC	MILK
8	0.7	53	89	0.86	7	26
CW	MARB	RE	FAT	\$W	\$B	
31	0.70	0.46	0.015	59.27	119.32	

CED	BW	WW	YW	DMI	YH	SC	DOC	HP	CEM	MLK	MW	MH	CW	MARB	RE	FAT	TEND
45	19	35	65	68	94	38	54	47	68	68	87	92	74	40	89	80	39

8064 is the youngest heifer in the offering, but is definitely not short on quality. Her dam had a high selling heifer on the sale last year. The Accelerate females have us excited for his future in our program and this female shows just why. Attractive through her front end, bold ribbed, and sound on her feet and legs.

- Top 20% \$W, Top 25% \$QG



SCVH

SOUTH CENTRAL VETERINARY HOSPITAL

DR. CADE MOSES AND DR. TIFFANY MOSES

1441 EAST 3RD ST | SUPERIOR, NE 68978 | 402-879-4767

SCVETHOSPITAL.COM

VITAFERM



YOUR LOCAL VITAFERM DEALERS

KYLE SCHULTZ
402-879-1264

KEVIN SCHULTZ
402-879-5356



Driving the science of better breeding

There's little room for error in the cattle business. Producers need the most advanced information to make smart selection decisions, and Angus Genetics Inc. (AGI) provides it through genomic-enhanced expected progeny differences (GE-EPDs).

GE-EPDs have become the industry standard for herd improvement, building on decades of science-backed genetic evaluation tools originated and maintained through the American Angus Association®, home to the largest and ever-growing single-breed beef cattle database.

EPDs that traditionally contained all pedigree, performance and progeny information now also include results from available genomic, or DNA, tests. Breeders who use genomic technology give buyers access to AGI-generated GE-EPDs that provide:

Increased predictability and decreased risk for young and unproven animals due to enhanced accuracy of EPDs

Better characterization of genetics for difficult-to-measure performance traits (such as carcass traits, maternal traits and feed efficiency)

The ability to make more rapid progress for traits that are important to you, due to:

- more accurate selection
- easier identification of genetic outliers
- the ability to propagate young animals with confidence earlier in their lives

In fact, GE-EPDs on unproven animals have the same amount of accuracy as if they had recorded 8-33 calves, depending on the trait. That's valuable insight, offered regularly through the breed's weekly national cattle evaluation.

Trait	Progeny Equivalent	Trait	Progeny Equivalent
Calving Ease Direct	28	Milk	33
Birth Weight	21	Mature Weight	11
Weaning Weight	26	Mature Height	8
Yearling Weight	21	Carcass Weight	9
Dry Matter Intake	8	Yearling Height	11
Scrotal Circumference	13	Carcass Marbling	9
Docility	10	Carcass Ribeye	12
Heifer Pregnancy	14	Carcass Fat	10

How do you know if EPDs are genomic-enhanced?

Ask your breeder, refer to the registration paper, or look for the AGI GE-EPD logo, Angus GS™ powered by partner Neogen GeneSeek or the HD50k by partner Zoetis. These images indicate animals for which low-density or high-density genomic testing has been conducted and incorporated by AGI into GE-EPDs



www.angus.org

JASON & KATIE JAGELS
1749 ROAD 5000
DAVENPORT, NE 68335

THE CATTLEMENS — BULL SALE — CUT



THURSDAY, MARCH 14, 2019

1:00 PM

BELLEVILLE 81 LIVESTOCK | BELLEVILLE, KANSAS